

ALA Steering Committee

Terms of Reference

Enhanced governance arrangements

To provide key strategic and relationship oversight, we will be initiating a new project steering committee to be chaired by CSIRO, with DIISR membership, to whom the ALA Director will report. The existing ALA Management Committee will continue in its role advising the ALA Director, but with possible expansion to increase representation and skills base.

Terms of Reference for ALA Steering Committee

Terms of reference

The Project Steering Committee will:

- In partnership with the ALA Management Committee, foster an environment of cooperation and collaboration within the Australian scientific community that supports the successful delivery of the Atlas of Living Australia
- In partnership with the ALA Management Committee, support effective interaction between the Atlas of Living Australia Project, Australian Government departments (especially DIISR and DEWHA) and other stakeholders who will benefit from the products and services delivered by the Atlas.
- In partnership with the ALA Management Committee, consider options for future of the Atlas after the NCRIS/EIF funding ceases, and help build relationships with other potential future partners in the Atlas, including internationally;
- Ensure that the Project is delivered on time, on budget and within scope, consistent with Australian Government procurement and legal requirements and the decisions of the Atlas of Living Australia Management Committee.

Membership

The ALA Steering Committee is chaired by Dr Andrew Johnson, Group Executive, Environment and will include:



1. Greg Piko, representing Science and Infrastructure Division, Department of Innovation, Industry, Science and Research
2. The Chair of the ALA Management Committee (currently Brett Summerell, Council of Heads of Australasian Herbaria)
3. Malcolm Thompson, representing DEWHA
4. Joanne Daly, Group Executive, Agribusiness, CSIRO
5. Finance Manager, Environment Group, CSIRO
6. Chief of the CSIRO Division housing the ALA (Mark Lonsdale, CSIRO Entomology)

The ALA Director would report to, but not be a member of, this committee.

Meetings

The Project Steering Committee will meet four times a year, or more as the Chair deems appropriate.

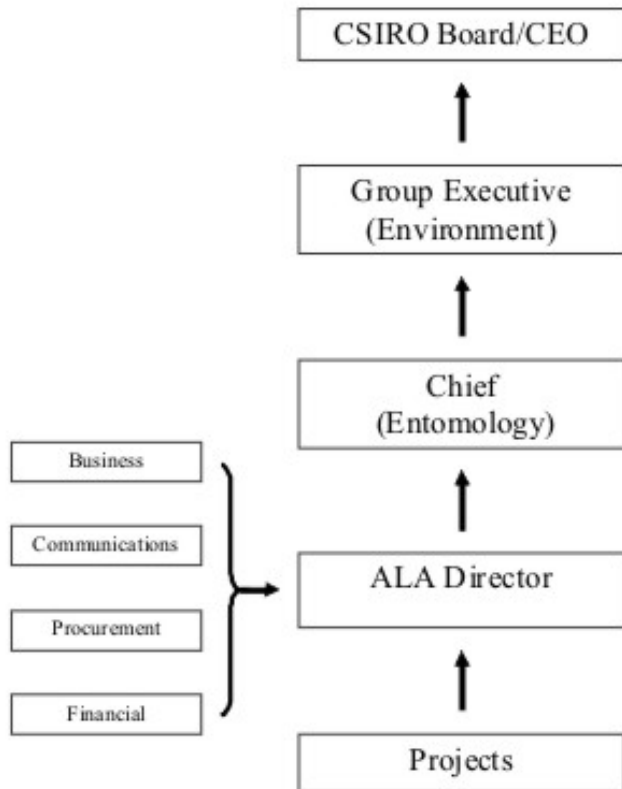
A question arising at a meeting is decided by a majority of the votes of members present and voting. At a meeting, the Chair or other member presiding has a deliberative vote and, in the event of votes being equal, also has a casting vote.

Interrelationships between committees

It is important to consider two aspects of governance in articulating the interrelationships between the committees and individuals involved in the Atlas. The first aspect is accountability: whose reputation is on the line for managing and mitigating project risks? The second is responsibility: which committees or individuals have been delegated the role of providing guidance on priorities and direction for the Atlas? For the Atlas, it is ultimately the CSIRO group executive (environment), and CSIRO line managers reporting to him, who are accountable for the performance and delivery of the project. However, because of the essentially highly collaborative nature of this project, responsibility for its execution and project direction is delegated to the Atlas management committee and ALA project director.

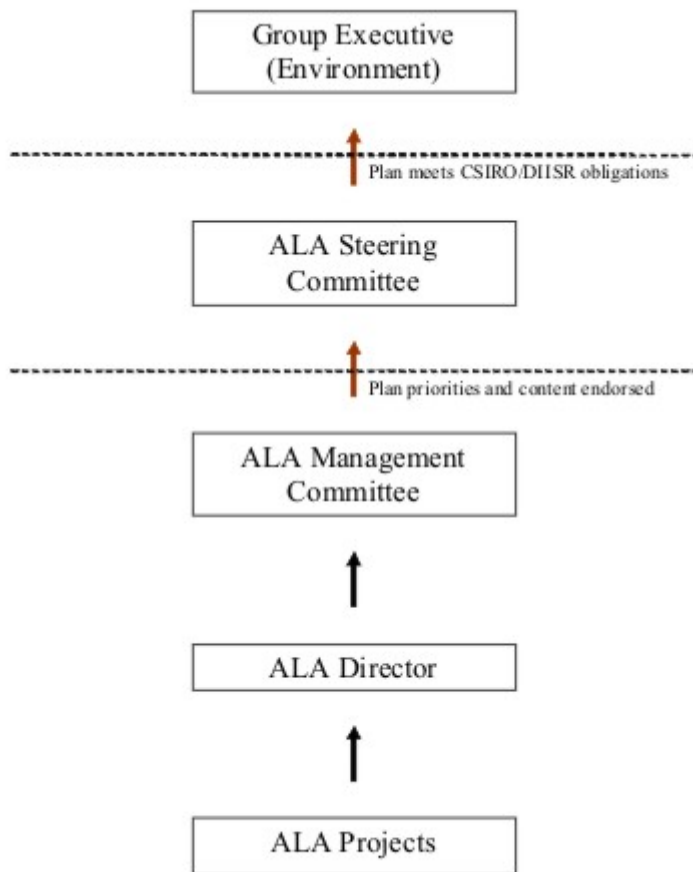
Accountability Relationships





Responsibility Relationships





Development of ALA Business Plans



