

www.ala.org.au

The Atlas of Living Australia

Integrated National Biodiversity Information

Donald Hobern

Donald.Hobern@csiro.au

TDWG Conference Symposium

Global biodiversity informatics initiatives update

New Orleans, 18 October 2011, 2.45 p.m.

The Atlas is funded by the Australian Government under the National Collaborative Research Infrastructure Strategy and further supported by the Super Science Initiative of the Education Investment Fund



Atlas of Living Australia



- Australian Government: \$38.2M (2006-2012)
- ALA partner in-kind contributions: \$26.5M
- Mission
 - To develop an authoritative, freely accessible, distributed and federated biodiversity data management system
- Participants:



Tasmanian Museum & Art Gallery



The Council of Heads of Australian Faunal Collections (CHAFC)
The Council of Heads of Australian Entomological Collections (CHAE)



The Council of Heads of Australasian Collections of Microorganisms (CHACM)
The Council of Australasian Museum Directors (CAMD)

An Australian Government Initiative
National Collaborative Research Infrastructure Strategy

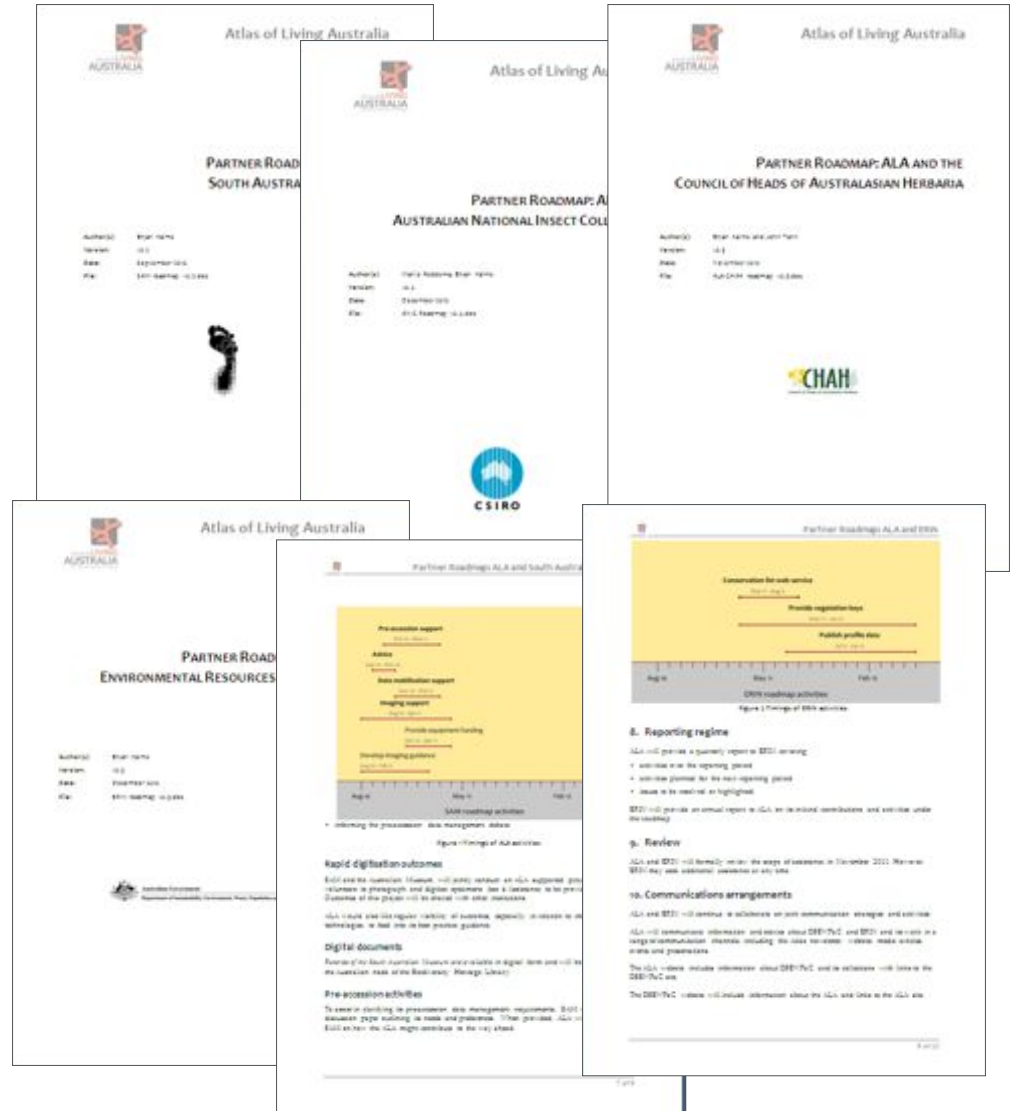
User needs and roadmaps



Atlas of Living Australia
User needs analysis

John Tann
Lynde Kelly
Paul Flemons

November 2008

Atlas of Living Australia

PARTNER ROAD SOUTH AUSTRALIA

Atlas of Living Australia

PARTNER ROADMAP: ALA AND THE COUNCIL OF HEADS OF AUSTRALASIAN HERBARIA

Atlas of Living Australia

PARTNER ROAD ENVIRONMENTAL RESOURCES

Atlas of Living Australia

Partner Roadmaps ALA and South Australia

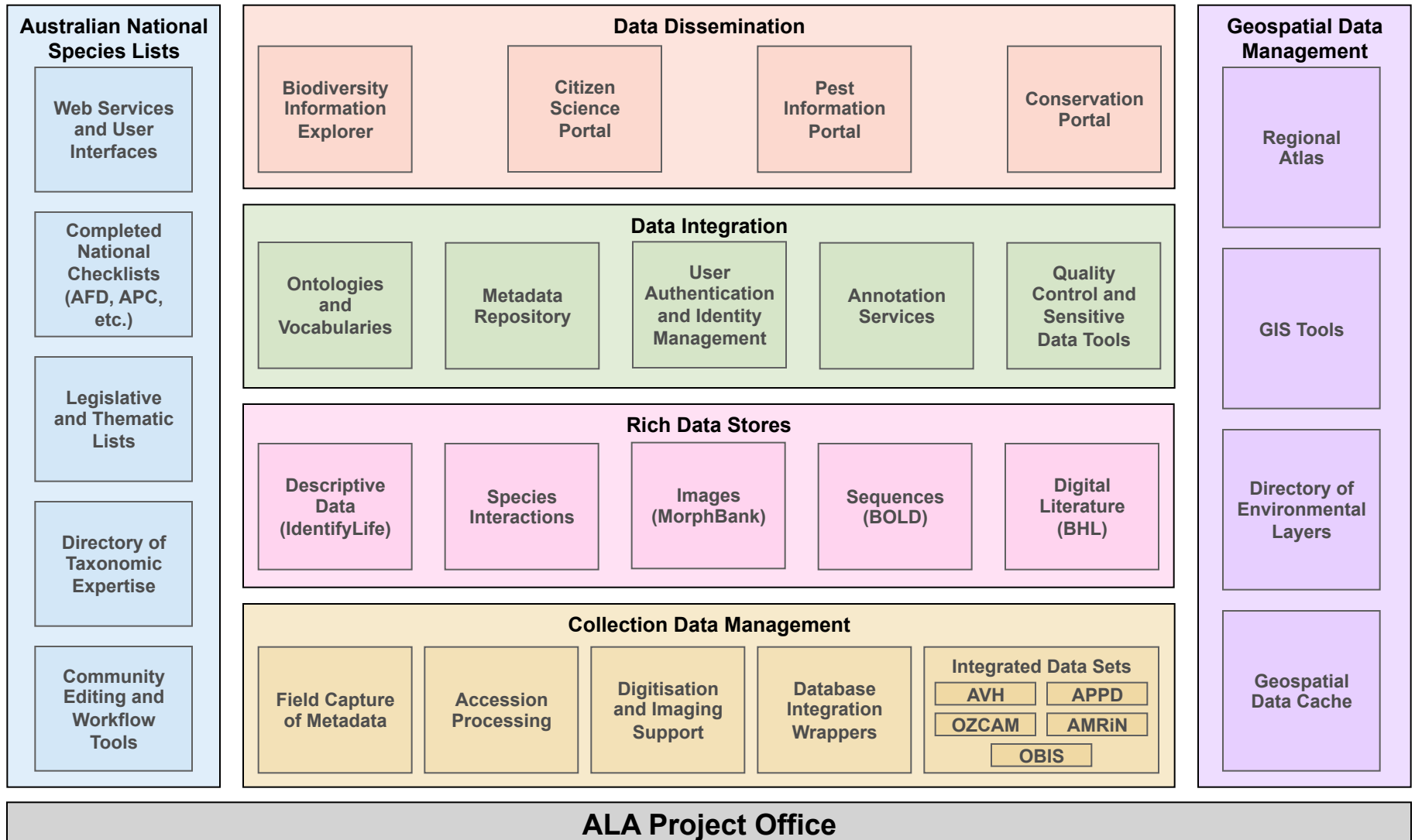
8. Reporting regime

9. Review

10. Communications arrangements

CSIRO

Delivery plan



National species lists

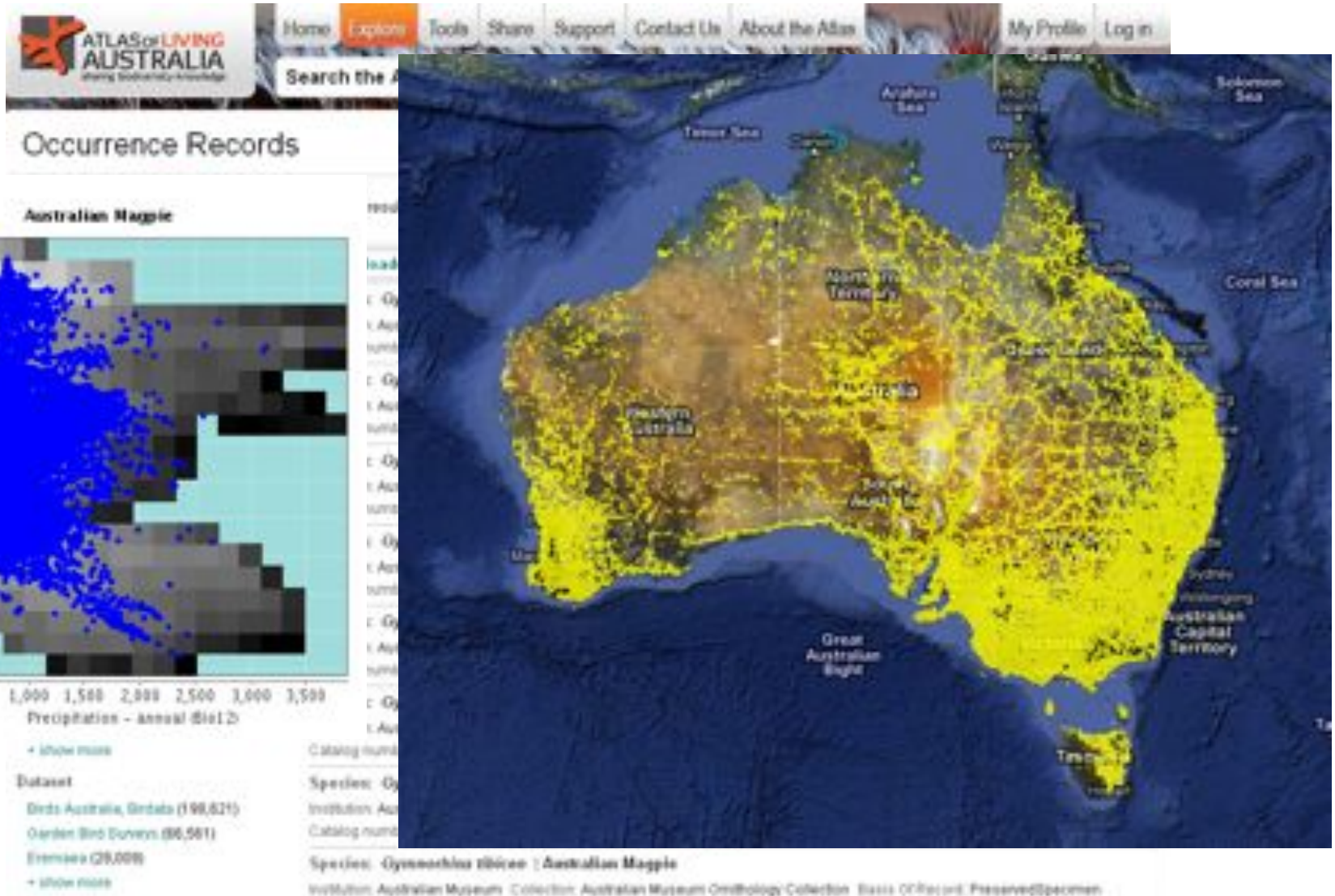
Nymphoides Seg. [CHAH 2006]

URI <http://biodiversity.org.au/apni/taxon/309365>
LSID <urn:lsid:biodiversity.org.au:apni:taxon:309365>
Modified 2009-10-15
Name [Nymphoides Seg.](#) 
Taxonomic tree [according to apc](#) 
Rank Genus (gen)
According to CHAH (2006)
Publication CHAH, (2006) Australian Plant Census.

- includes (taxonomic) [Linnæsthemum S. G. Gmel.](#) 
- includes (taxonomic) [Vilarsia sect. Linnæsthemum \(S. G. Gmel.\) F. Muell.](#) 
- is child taxon of (classification) [Metyanthaceae Dumort.](#) [CHAH 2008]  
- is parent taxon of (classification) [Nymphoides aurantiaca \(Dalzell\) Kuntze](#) [CHAH 2006] 
- is parent taxon of (classification) [Nymphoides aurantiaca \(Dalzell\) Kuntze sensu Aston, H.I. \(2009\)](#)  
- is parent taxon of (classification) [Nymphoides beagleensis Aston](#)  
- is parent taxon of (classification) [Nymphoides crenata \(F. Muell.\) Kuntze](#) [CHAH 2006]  
- is parent taxon of (classification) [Nymphoides crenata \(F. Muell.\) Kuntze](#) [CHAH 2006]  
- is parent taxon of (classification) [Nymphoides duperrea Aston](#)  
- is parent taxon of (classification) [Nymphoides elliptica Aston](#) [CHAH 2006]  
- is parent taxon of (classification) [Nymphoides elliptica Aston](#) [CHAH 2006]  
- is parent taxon of (classification) [Nymphoides enigma \(F. Muell.\) Kuntze](#) [CHAH 2006]  
- is parent taxon of (classification) [Nymphoides enigma \(F. Muell.\) Kuntze](#) [CHAH 2006]  
- is parent taxon of (classification) [Nymphoides ensiflora \(F. Muell.\) Kuntze](#) [CHAH 2006]  
- is parent taxon of (classification) [Nymphoides ensiflora \(F. Muell.\) Kuntze](#) [CHAH 2010]  
- is parent taxon of (classification) [Nymphoides farcufolia Specht](#) [CHAH 2006]  
- is parent taxon of (classification) [Nymphoides farcufolia Specht](#) [CHAH 2006]  
- is parent taxon of (classification) [Nymphoides geminata \(R. Br.\) Kuntze](#) [CHAH 2006] 
- is parent taxon of (classification) [Nymphoides geminata \(R. Br.\) Kuntze](#) [CHAH 2010]  

Rye, B.L. in Wheeler, J.R., Rye, B.E., Koch, B.L., Wilson, A.J.G. (Ed) (1992), *Flora of the Kimberley*

Species occurrence data



ALA-supported projects



NSL Services



Taxonomy Research & Information Network

building australian capacity



open-delta

A Java port of the DELTA – DEscription Language for TAXonomy suite



ABOLN
AUSTRALIAN BARCODE
OF LIFE NETWORK



Biodiversity Heritage Library AUSTRALIA

[About BHL](#) [Contact Us](#)

The Biodiversity Heritage Library–Australia is the digital literature component of the Atlas of Living Australia. BHL-Au also participates in the consortium of Biodiversity Heritage Libraries and affiliated literature digitisation projects around the world.



Browse Our Collection



Titles



Authors



Maps



Year

Featured Books



Australian bird maps.
Hobart, Australia :Hall, 1922.



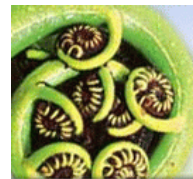
Extinct and vanishing mammals o...
New York, American Committee for International ...



Bulletin / Division of Entomology, ...
Brisbane, Queensland :A.J. Cumming, ...



Eastern Rosella, *Platycercus eximius*,
John Gould's Birds of Australia, 1840-1848



IdentifyLife

"The beginning of wisdom is to call a thing by its right name"

[Home](#)

[Keys Central](#)

[My IdentifyLife](#)

[Key to All Life](#)



Welcome to Morphbank ALA

User: Guest [\[click to login\]](#)

Rich Data: Images

Image 2000389
Search Go back (click to login)

About Browse Tools Help


Image Record: [2000389] *Cinclosoma cinnamomeum tirariensis*


Contributor: Australian National Wildlife Collection
Submitter: Peter Benham
Group: CSIRO - ANWC
Date Submitted: 2011-02-17
Last Modified: 2011-02-17
Publish Date: 2010-12-09

Magnification: NULL
Dimension (px): x
Resolution (PPI):
Submitted as: jpg
Original File Name: 040136.jpg
Photographer:

View Id: 2000386
Specimen part: Whole body
Angle: Unspecified
Technique: Unspecified
Preparation: Unspecified

Download: original (jpg) (7.51 MB)
full size (png) (7.51 MB)medium sized (jpg) (211.45 KB)

Copyright: CSIRO
License: 

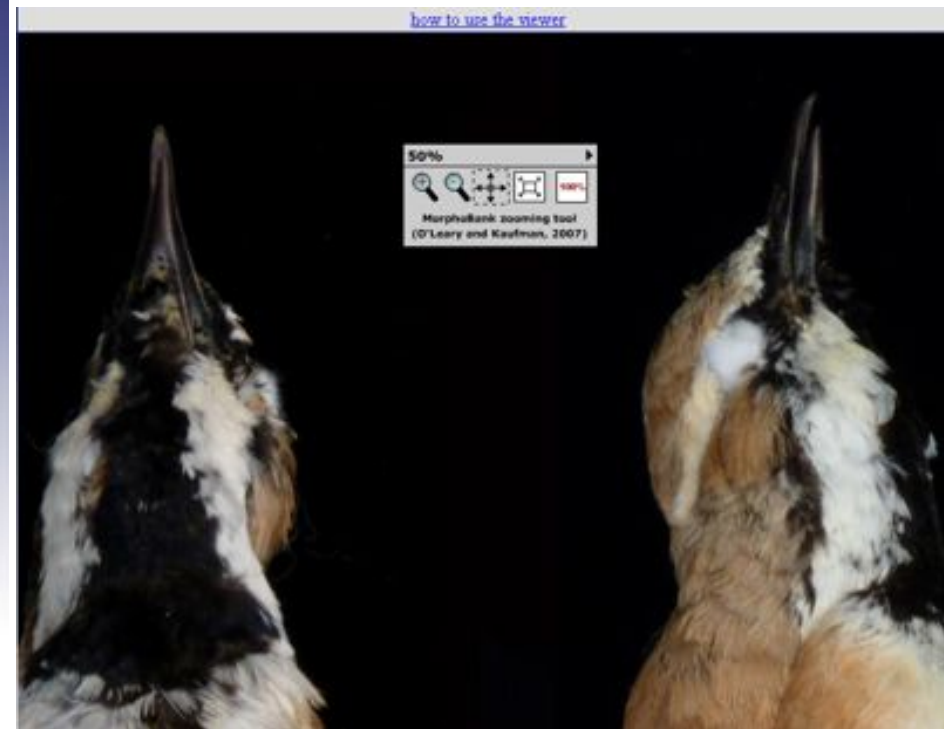


Specimen
Specimen id: 2000387
Basis of record: (5) - Specimen
Sex: M
Form:
Stage:
Catalog number: 40136
Collector: L. Christidis
Date collected: 1985-09-08

Locality [Edit this locality](#)
Locality id: 2000388
Continent ocean:
Country: Australia
Locality: Innamincka Track
Latitude:
Longitude:
Elevation (m):

Determination
Kingdom: [Animalia](#)
Phylum: [Chordata](#)
Class: [Aves](#)
Order: [Passeriformes](#)
Family: [Corvidae](#)
Genus: [Cinclosoma](#)
Species: [Cinclosoma cinnamomeum](#)
Subspecies: [Cinclosoma cinnamomeum tirariensis](#)

External links/identifiers
External Unique Reference:
External identification: ANWC-2-00083
Specimen 2000387 External identification: ANWC-5-00083
Web Page:



Rich Data: Identification tools



	taxon	feature	state	value	inferred	certainty	frequency	created	createdby		
2	Acacia affin. trachycarpa	Phyllode midrib position	central	PRESENT	FALSE	CERTAIN	FREQUENT	27/07/2011 0:15	importer		
3	Acacia affin. trachycarpa	Phyllode midrib position	markedly excentric	ABSENT	FALSE	CERTAIN	FREQUENT	27/07/2011 0:18	importer		
4	Acacia affin. trachycarpa	Phyllode apex (pungency)	sharply pungent	PRESENT	FALSE	CERTAIN	FREQUENT	27/07/2011 0:15	importer		
5	Acacia affin. trachycarpa	Phyllode apex (pungency)	coarsely pungent	PRESENT	FALSE	CERTAIN	FREQUENT	27/07/2011 0:15	importer		
6	Acacia affin. trachycarpa	Phyllode apex (pungency)	not pungent	ABSENT	FALSE	CERTAIN	FREQUENT	27/07/2011 0:18	importer		
7	Acacia affin. trachycarpa	Phyllode base (decurrence)	continuous with branchlets	ABSENT	FALSE	CERTAIN	FREQUENT	27/07/2011 0:18	importer		
8	Acacia affin. trachycarpa	Phyllode base (decurrence)	not continuous with branchlets	PRESENT	FALSE	CERTAIN	FREQUENT	27/07/2011 0:15	importer		
9	Acacia affin. trachycarpa	Pulvinus (presence)	present	PRESENT	FALSE	CERTAIN	FREQUENT	27/07/2011 0:15	importer		
10	Acacia affin. trachycarpa	Pulvinus (presence)	absent or very reduced	ABSENT	FALSE	CERTAIN	FREQUENT	27/07/2011 0:18	importer		
11	Acacia affin. trachycarpa	Gland at apex of phyllodes	present	ABSENT	FALSE	CERTAIN	FREQUENT	27/07/2011 0:18	importer		
12	Acacia affin. trachycarpa	Branchlet hairs (presence)	present	PRESENT	FALSE	CERTAIN	FREQUENT	27/07/2011 0:15	importer		
13	Acacia affin. trachycarpa	Gland at apex of phyllodes	absent	PRESENT	FALSE	CERTAIN	FREQUENT	27/07/2011 0:15	importer		
14	Acacia affin. trachycarpa	Gland connected to midrib by nerve (phyllodes)	yes	ABSENT	FALSE	CERTAIN	FREQUENT	27/07/2011 0:18	importer		
15	Acacia affin. trachycarpa	Gland connected to midrib by nerve (phyllodes)	no	ABSENT	FALSE	CERTAIN	FREQUENT	27/07/2011 0:18	importer		
16	Acacia affin. trachycarpa	Petiole glands (presence)	present	ABSENT	FALSE	CERTAIN	FREQUENT	27/07/2011 0:18	importer		
17	Acacia affin. trachycarpa	Petiole glands (presence)	absent	ABSENT	FALSE	CERTAIN	FREQUENT	27/07/2011 0:18	importer		
18	Acacia affin. trachycarpa	Jugary glands (presence)	present	ABSENT	FALSE	CERTAIN	FREQUENT	27/07/2011 0:18	importer		
19	Acacia affin. trachycarpa	Jugary glands (presence)	absent	ABSENT	FALSE	CERTAIN	FREQUENT	27/07/2011 0:18	importer		
20	Acacia affin. trachycarpa	Jugary glands (position)	present between all pairs of pinnae	ABSENT	FALSE	CERTAIN	FREQUENT	27/07/2011 0:18	importer		
21	Acacia affin. trachycarpa	Jugary glands (position)	present between the lower pair(s) of pinnae	ABSENT	FALSE	CERTAIN	FREQUENT	27/07/2011 0:18	importer		
22	Acacia affin. trachycarpa	Jugary glands (position)	present between the upper part(s) of pinnae	ABSENT	FALSE	CERTAIN	FREQUENT	27/07/2011 0:18	importer		
23	Acacia affin. trachycarpa	Branchlet hairs (orientation)	appressed	PRESENT	FALSE	CERTAIN	FREQUENT	27/07/2011 0:15	importer		
24	Acacia affin. trachycarpa	Jugary glands (position)	present between only a few pair of pinnae	ABSENT	FALSE	CERTAIN	FREQUENT	27/07/2011 0:18	importer		
25	Acacia affin. trachycarpa	Interjugary glands (presence)	present	ABSENT	FALSE	CERTAIN	FREQUENT	27/07/2011 0:18	importer		

A dichotomous key to the species of *Chamaecrista* in Australia, from the Flora of Australia [Details ...](#)

Key to the species of *Labiichea* in Australia

A dichotomous key to the species of *Labiichea* in Australia, from the Flora of Australia [Details ...](#)

Species pages

Home Explore Tools Share Support Contact Us About the Atlas My Profile Log out

Search the Atlas

Home : Explore : *Grus rubicunda* (Perry, 1810) : Brolga

Grus rubicunda (Perry, 1810)
Brolga

Rank Species
Name source [Australian Faunal Directory](#)
Data links [LSID](#) | [JSON](#)

Animals Chordata Aves Gruiformes Gruidae Grus *Grus rubicunda*

Overview Gallery Names Classification Records Literature

Mapped occurrence records
[View occurrence records list](#) | [View interactive map](#)

Learn more about Atlas maps

RECORDED IN AUSTRALIA **TERRESTRIAL HABITATS** **IUCN** **SA** **VULNERABLE**
VIC **NSW** **VULNERABLE** **VULNERABLE**


Share
Sightings, photos and data for the Brolga

Description

The Brolga is quite unmistakable in southern Australia. (Australia's only other crane, the Sarus Crane, is found only in far northern Australia.) It is a huge bird - one of Australia's largest flying birds - standing 1.3 metres tall with a wingspan of nearly 2.5 metres. It is pale bright grey with a broad band of bare red skin from the beak round the nape of the neck and a black dewlap under the chin. ...
source: [Department of Environment and Conservation - NSW threatened species](#)

The full-grown Brolga is a tall, mid-grey to silver-grey crane, 0.7–1.3 m (3.3–4.3 ft) high, with a wingspan of 1.7–2.4 m (5.6–7.9 ft), and a broad red band extending from the straight, bone-coloured bill around the back of the head. Juveniles lack the red band. Adult males average at a little under 7 kg (15 lb), females a little under 6 kg (13 lb). ...
source: [Wikipedia](#)

Citizen science




Home Explore Tools Share Support Contact Us About the Atlas My Profile Log out

Search the Atlas

Logged in as donald.hobem@csiro.au

Share a Sighting

Elanus axillaris : Black-shouldered Kite 

Date: 21 Sep 2011

Time: 15:55

Individual Count: 1

Location: LOT 7 Hume Hwy, Glenfield NSW 2167, Australia

Latitude: -33.973061

Longitude: 150.874739

Coordinate: 500

Uncertainty in Meters:


Additional Comments: Hovering and heading south

Media File: No file chosen

Bookmarked locations: -- select bookmarked location --

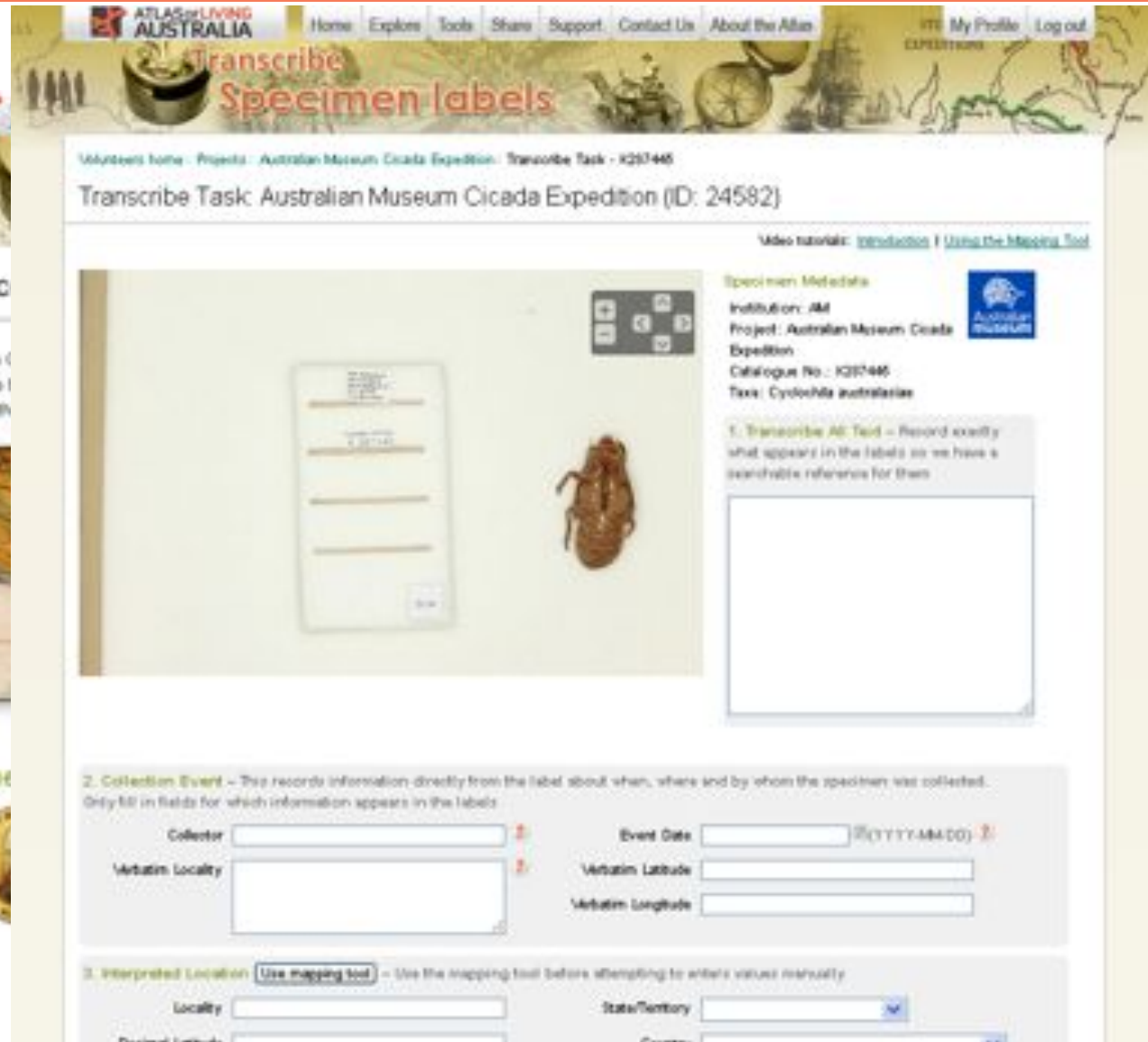
Hume Highway, near South Western Motorway

Bookmark location Set as default



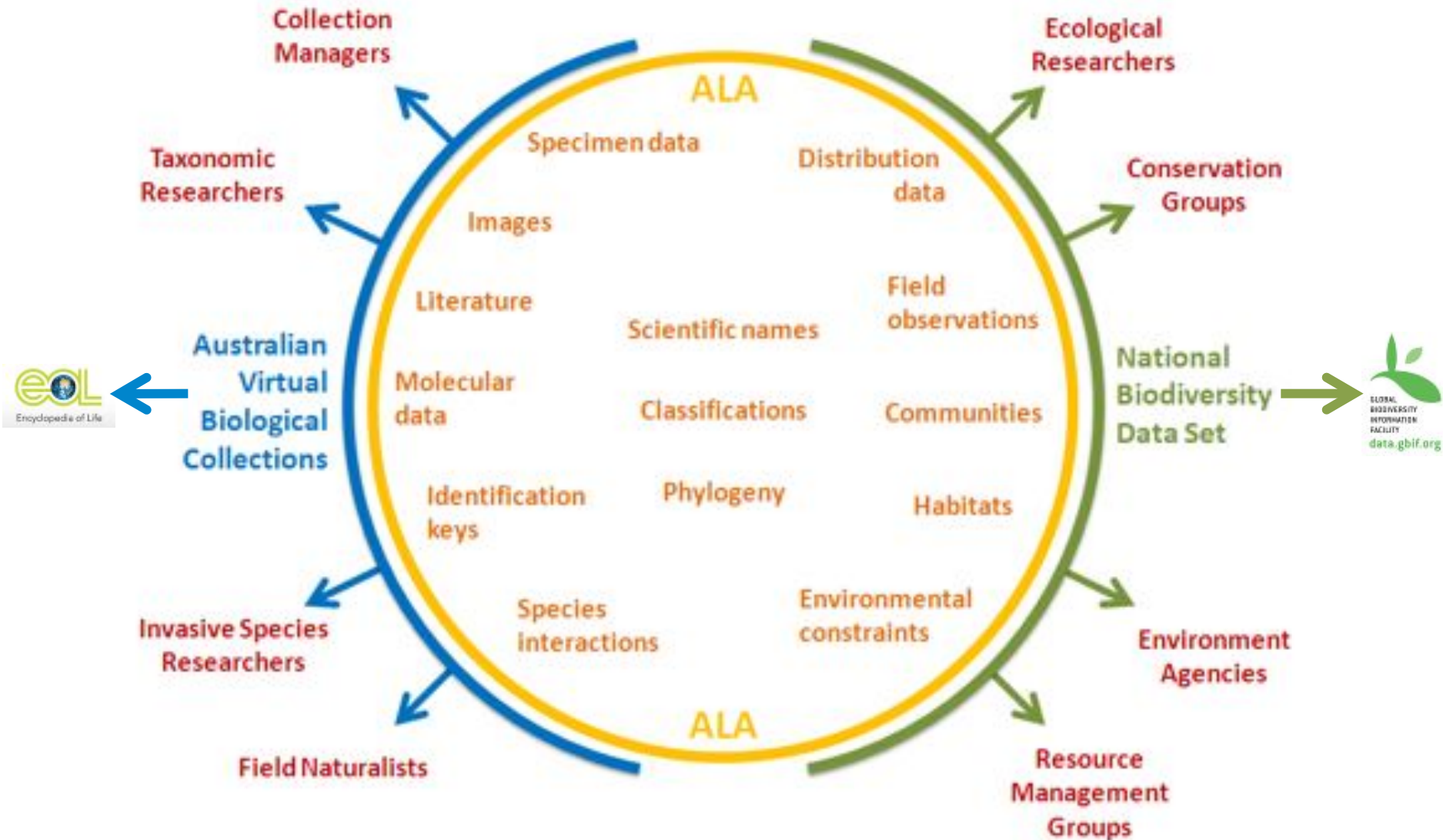
Hints: click and drag the marker to fine-tune the location coordinates.

Volunteer involvement



The screenshot shows the 'Transcribe Specimen Labels' interface on the Atlas of Living Australia website. The page title is 'Transcribe Task: Australian Museum Cicada Expedition (ID: 24582)'. It features a central image of a cicada specimen next to its label. To the right, there is a 'Specimen Metadata' section with the following information: Institution: AM, Project: Australian Museum Cicada Expedition, Catalogue No.: K207440, and Taxa: *Cyclochila australasiae*. Below this is a text box for transcription instructions: '1. Transcribe All Text - Record exactly what appears in the labels so we have a searchable reference for them'. The bottom section is titled '2. Collection Event' and contains form fields for Collector, Event Date (YYYY-MM-DD), Verbatim Locality, Verbatim Latitude, and Verbatim Longitude. A third section, '3. Interpreted Location', includes a 'Use mapping tool' button and form fields for Locality, State/Territory, and Country.

ALA and user communities



Adoption of ALA by users




InBIF
Wildlife Institute of India - Atlas of Living Australia
Mentoring Project

Wildlife Institute of India, New Delhi
110068, India
Tel: +91 11 2619 5111
Fax: +91 11 2619 5112
Email: info@wii.gov.in

Wildlife Institute of India - Atlas of Living Australia Mentoring Project

What is InBIF?
InBIF is a mentoring project that provides a platform for Indian Biodiversity Information Facility (IBIF) users to interact with experts in the field of biodiversity information systems and data management.

Objectives:
To provide a platform for Indian Biodiversity Information Facility (IBIF) users to interact with experts in the field of biodiversity information systems and data management.

Activities:
- Regular webinars and workshops
- Field visits and hands-on training
- Exchange of knowledge and experiences

Contact:
Dr. Anand Kumar, InBIF Coordinator
Email: anandkumar@wii.gov.in
Phone: +91 11 2619 5111

Journal of the Royal Society of Western Australia 94:3 (2013) 351

Mangroves of the Kimberley Coast: ecological patterns in a tropical ria coast setting

J.J. Clewley^{1,2} & V. Yessierli³

¹CSIRO Health, Water & Ocean Policy, 120 Sturt St, Perth, Western Australia
²CSIRO Research Group, 11 Gordon St, Mandurah, WA, Australia
Manuscript received 19th August 2012

Abstract

Mangroves of the Kimberley Coast occupy a geographical position that is a special blend of cultural change in the western world and the eastern world. The Kimberley Coast mangroves are a unique blend of a tropical ria coast setting and a temperate climate. The Kimberley Coast mangroves are a unique blend of a tropical ria coast setting and a temperate climate. The Kimberley Coast mangroves are a unique blend of a tropical ria coast setting and a temperate climate.

Introduction

The Kimberley Coast (KC) is a unique geographical position that is a special blend of cultural change in the western world and the eastern world. The Kimberley Coast mangroves are a unique blend of a tropical ria coast setting and a temperate climate. The Kimberley Coast mangroves are a unique blend of a tropical ria coast setting and a temperate climate.

Methods

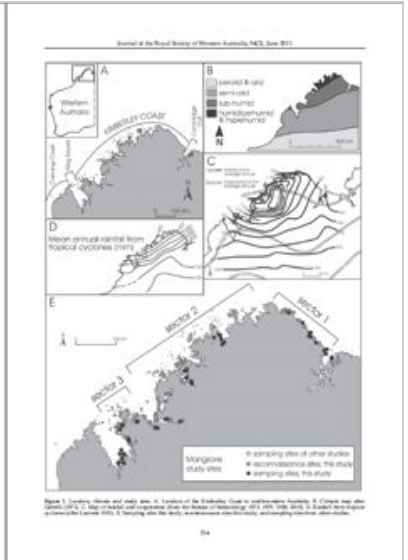
The Kimberley Coast mangroves were surveyed using a combination of ground-based and satellite-based methods. The Kimberley Coast mangroves were surveyed using a combination of ground-based and satellite-based methods.

Results

The Kimberley Coast mangroves were found to be a unique blend of a tropical ria coast setting and a temperate climate. The Kimberley Coast mangroves were found to be a unique blend of a tropical ria coast setting and a temperate climate.

Conclusions

The Kimberley Coast mangroves are a unique blend of a tropical ria coast setting and a temperate climate. The Kimberley Coast mangroves are a unique blend of a tropical ria coast setting and a temperate climate.

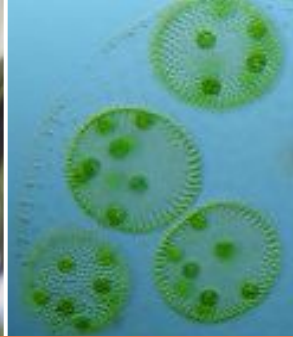


ALA tools and services adopted for Great Eastern Ranges restoration corridor activities

GBIF mentoring activity with Indian Biodiversity Information Facility

Mangroves of the Kimberley Coast: ecological patterns in a tropical ria coast setting - paper referencing data accessed through ALA





The Atlas of Living Australia Participants

www.ala.org.au



Tasmanian Museum & Art Gallery



The Council of Heads of Australian Faunal Collections (CHAFC)
The Council of Heads of Australian Entomological Collections (CHAEC)

The Council of Heads of Australasian Collections of Microorganisms (CHACM)
The Council of Australasian Museum Directors (CAMD)



An Australian Government Initiative
National Collaborative Research Infrastructure Strategy



The Atlas is funded by the Australian Government under the National Collaborative Research Infrastructure Strategy and further supported by the Super Science Initiative of the Education Investment Fund