

www.ala.org.au

Hub development

John Tann

john.tann@austmus.gov.au

ASBP-BGIWG

Melbourne, November 2011



The Atlas is funded by the Australian Government under the National Collaborative Research Infrastructure Strategy and further supported by the Super Science Initiative of the Education Investment Fund

Data hubs



AVH
Australia's Virtual Herbarium

Australian Commonwealth, State and Territory herbaria house over 10 million plant, animal and fungi specimens. The collecting information stored with these specimens provides the most complete picture of the distribution of Australia's flora to date.

Australia's Virtual Herbarium (AVH) is an online virtual herbarium that provides immediate access to this invaluable information.

Query AVH
About AVH
Partners
Sponsors
Credits

Updated 13 October 2011 | enquiries@avh.gov.au



Home About OZCAM OZCAM Data Copyright Contact us News

OZCAM
Online Zoological Catalogue of Australian Mammals

Search OZCAM

Participating Organisations

Welcome to the **Online Zoological Catalogue of Australian Mammals**. From this site you can search, map and download species records from many of Australia's major collections.

Workflows help with identification of specimens from the national parks and State regions and they promote the taxonomy, systematics, nomenclature and the nomenclature and of our Mammals. The website provides a user interface to access data about Australia's diverse fauna by allowing casual access to the collected collections of many of Australia's museums.

Click the **Search OZCAM** button to search the OZCAM database online. To access a list of the live links, go to the **OZCAM Data** page.

Learn: **OZCAM News**

OZCAM is an initiative of the Council of Heads of Australian Natural Collections (CHANAC).



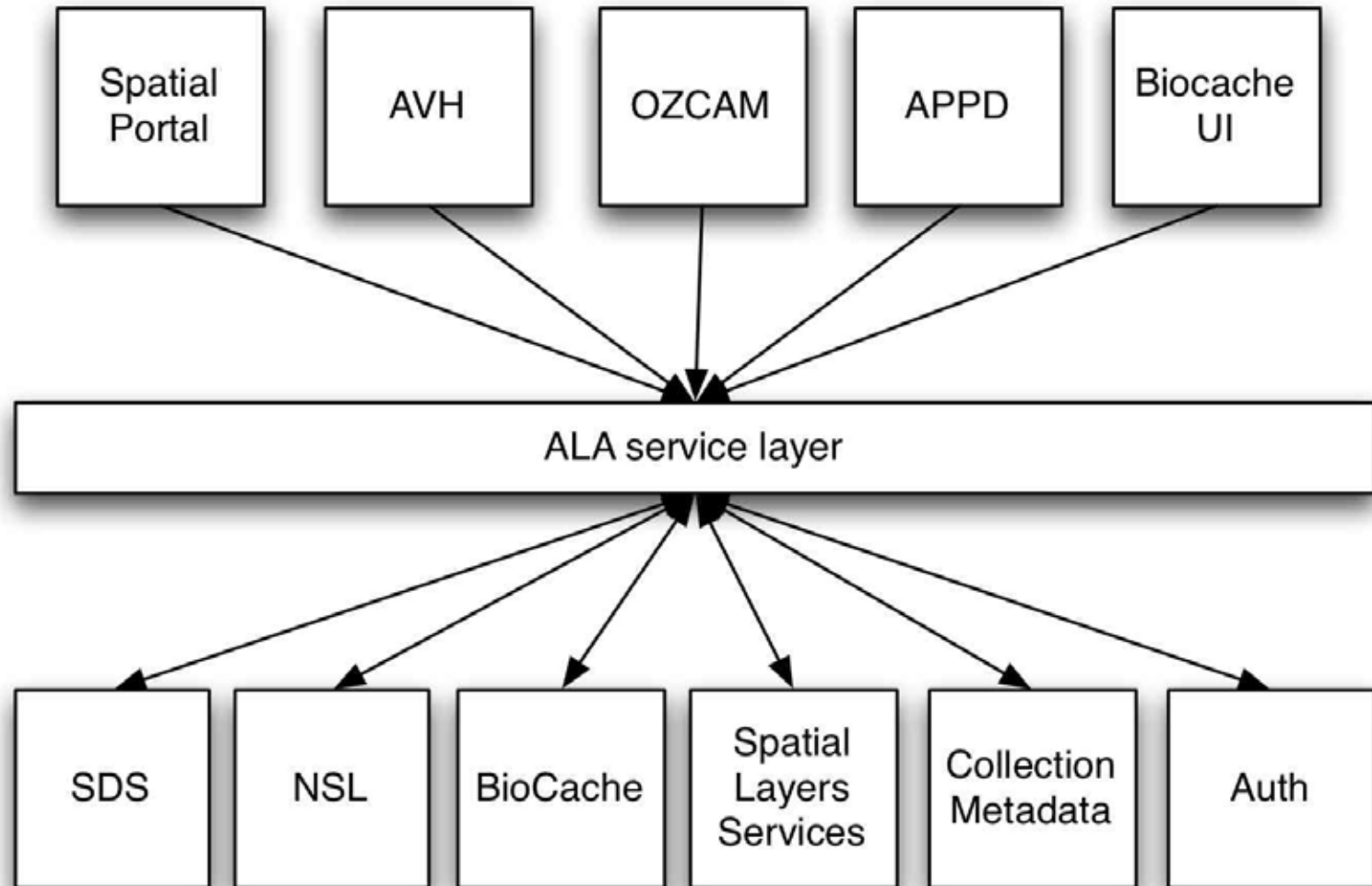
CHABG



APPD



Architecture



Customise



Home | Query AVH | About AVH | Partners | Help | Links

- “Customise” button shows a subset of facets

Occurrence Records

Search:

Refine Results **customise** 4,047,405 results for [all records]

Record Type
Preserved Specimen (4,047,405)

Institution
Department of Environment and Conservation (4,047,405)
Department of Environment and Natural Resources (688,876)
Centre for Australian Biodiversity Research (621,791)
+ show more

Collection
Western Australian Herbarium (961,668)
State Herbarium of Queensland (688,876)
Australian National Herbarium (621,791)
+ show more

Dataset
Australia's Virtual Herbarium (4,047,405)

Country
Australia (3,610,123)
Papua New Guinea (437,282)

Select the filter categories that are to appear in the "Refine Results" column

Select: All | None

- Record Type
- Specimen Type
- Institution
- Collection
- Dataset
- Country
- State/Territory
- Biogeographic Region
- Identified to Rank
- Species Group
- Kingdom
- Family
- Species
- Subspecies
- Scientific Name (unprocessed)
- Uncertainty (in metres)
- Species Interaction
- State Conservation
- State Conservation (unprocessed)
- Sensitive
- Record Issues
- Date (by month)
- Date (by decade)
- Images
- Location Quality

ia billardierei DC.
Botanic Gardens Melbourne
PreservedSpecimen

us gymnocaulos S
Botanic Gardens Melbourne
PreservedSpecimen

ucalyptus leptopod
For Australian National
PreservedSpecimen

ana sp. "Corunna"
Department Of Environment
PreservedSpecimen

ana sp. "Corunna"
Department Of Environment
PreservedSpecimen

ana sp. "Corunna"
Department Of Environment
PreservedSpecimen

ana sp. "Corunna"
Department Of Environment
PreservedSpecimen

Tabs to include images



Occurrence Records

Search: [Advanced Search](#)

Refine Results

[customise](#) ▾

Current Filters

■ Specimen Type: **holotype** [X]

Record Type

■ Preserved Specimen (17,832)

Institution

■ Australian Museum (8,257)

■ Museum Victoria (4,800)

■ Queensland Museum (4,430)

+ show more

Collection

■ Australian Museum
Malacology Collection (2,854)

■ Queensland Museum
Entomology (2,816)

■ Museum Victoria Entomology

17,957 results for [all records]

Records Map Charts **Images**

The 'Images' tab is active, displaying a grid of 12 specimen images. Each image includes a label with the species name and holotype number, and a 10mm scale bar. The specimens shown are:

- Sphaerilia evanida* Holotype NTM S. 10001-002
- Sphaerilia foveol* Holotype NTM S. 10016-041
- Lathrolepis andrea* Holotype NTM S. 10021-002
- Egglestonichthys donbykoi* Holotype NTM S. 10031-016
- Stolephorus adustus* Holotype NTM S. 10031-153
- Callopygus apilis* Holotype NTM S. 10183-001
- Stolephorus maculatus* Holotype NTM S. 10336-001
- Enneapterygius gracilis* Holotype NTM S. 10431-027
- Enneapterygius tenuicinctus* Holotype NTM S. 10600-032
- Enneapterygius holozon* Holotype NTM S. 10600-040
- Ceratobregma atrialis* Holotype NTM S. 10605-018
- Bremania longicauda* Holotype NTM S. 10623-001

Occurrence Records

Search:

[Advanced Search](#)

Refine Results

Current Filters

- Specimen Type: **holotype** [X]

Record Type

- Preserved Specimen (17,832)

Institution

- Australian Museum (8,257)
- Museum Victoria (4,800)
- Queensland Museum (4,430)

+ show more

Collection

- Australian Museum Malacology Collection (2,854)
- Queensland Museum Entomology (2,816)
- Museum Victoria Entomology Collection (2,665)

+ show more

Dataset

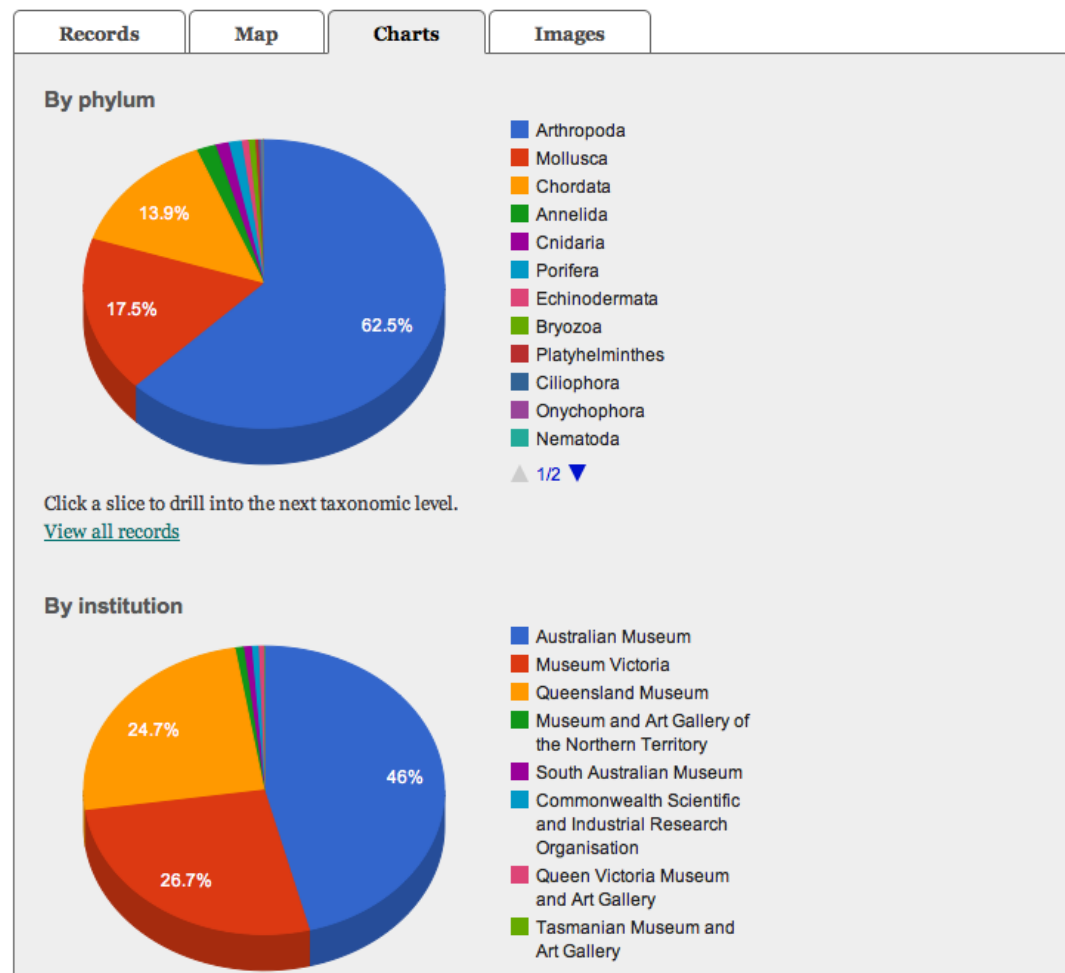
- Australian Museum provider for OZCAM (8,257)
- Museum Victoria provider for OZCAM (4,800)
- Queensland Museum provider for OZCAM (4,430)

+ show more

Country

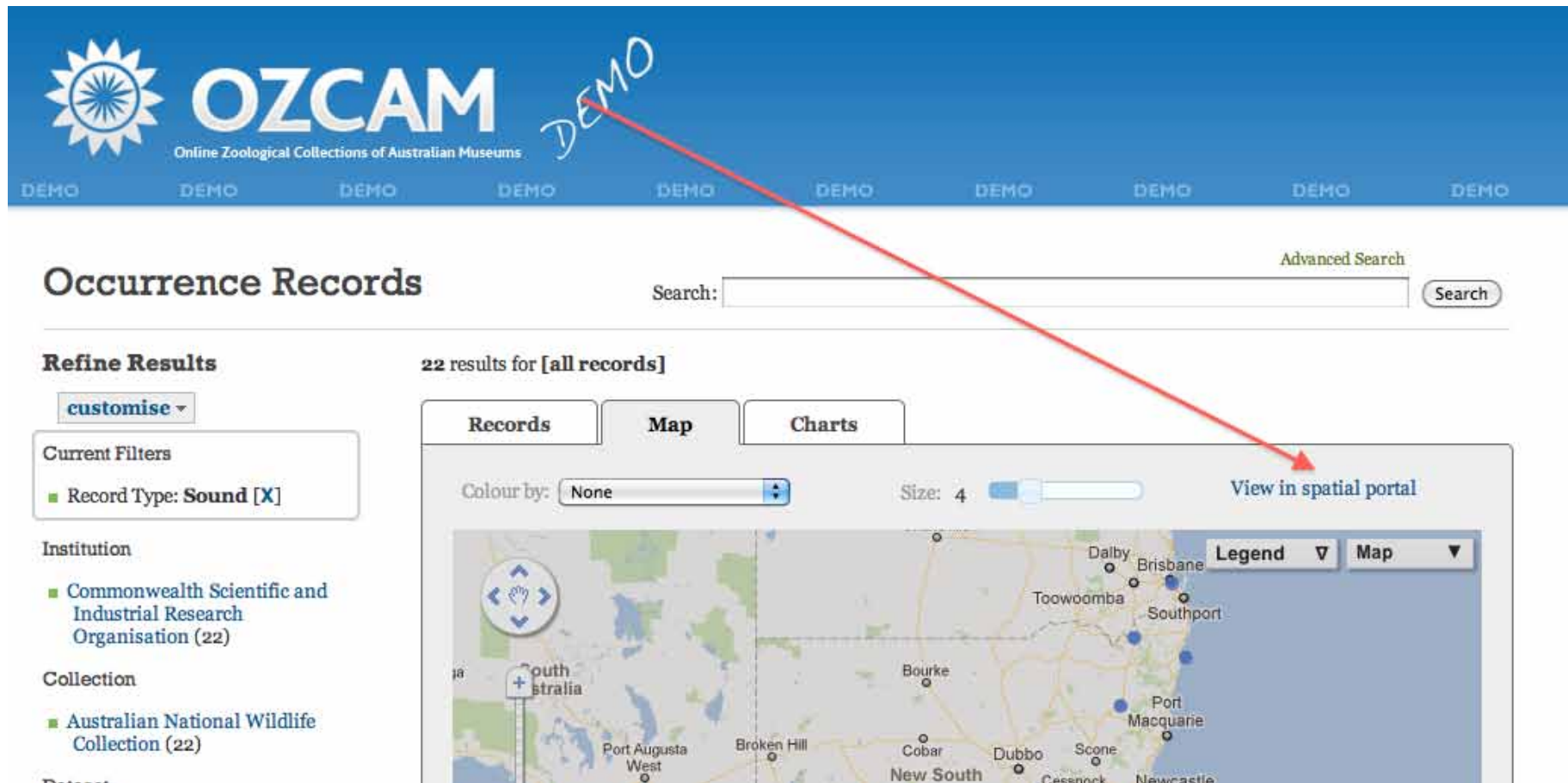
Australia (6,000)

17,957 results for [all records]



Link to Spatial Portal

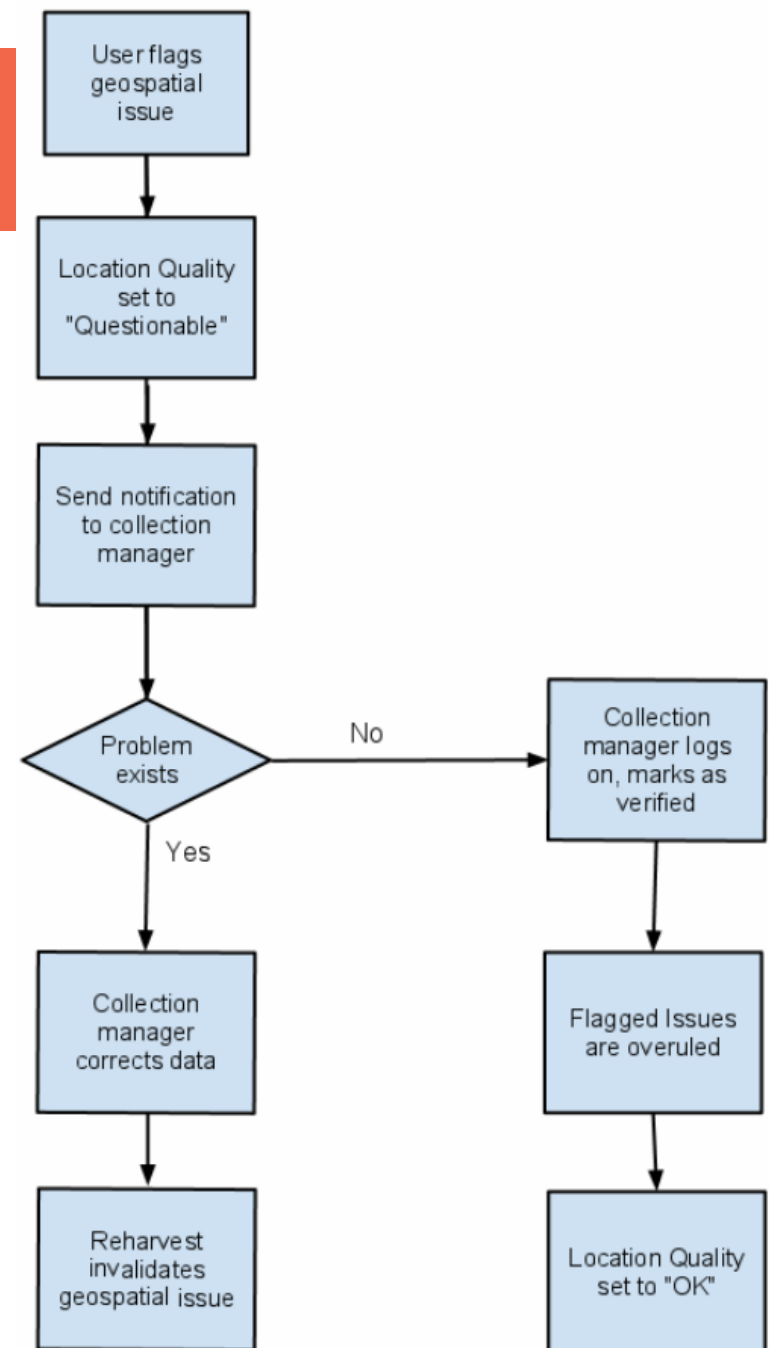
- Queries are carried through as a layer



The screenshot displays the OZCAM (Online Zoological Collections of Australian Museums) web interface. At the top, the OZCAM logo is visible with the text "Online Zoological Collections of Australian Museums". A red arrow points from the word "DEMO" written in the top right of the header to the "View in spatial portal" link in the map view. The main content area is titled "Occurrence Records" and includes a search bar and an "Advanced Search" link. Below the search bar, there are tabs for "Records", "Map", and "Charts". The "Map" tab is selected, showing a map of Australia with several blue dots representing occurrence records. The map includes a legend, a "Map" dropdown menu, and a "View in spatial portal" link. On the left side, there is a "Refine Results" section with a "customise" dropdown and a list of filters, including "Record Type: Sound [X]", "Institution: Commonwealth Scientific and Industrial Research Organisation (22)", and "Collection: Australian National Wildlife Collection (22)".

Annotations

- Shared database = shared annotations
- Annotations feed into maps for location quality
- Verification button for collection managers



Location Quality

OK (23,991,711)

Questionable (1,433,515)

- Early version for testing sandbox.ala.org.au
- User upload CSV data
- Performs processing
 - matches fields to terms (scientificName, latitude)
 - location lookups
 - sensitive data check
 - taxonomy matching (to APC, AFD)
 - quality checks
- Data visualising tool
 - same codebase as hubs
 - maps, charts, image, record viewer
 - facets
- Links through to spatial portal

Work to do

- Field guides
- Prototype in development
- Email alerts for
 - annotations
 - new records
 - by dataset
 - by taxon
 - by region
 - new spatial layers
- Shapefile upload
- Bulk list of taxa upload

Two questions

- How do you wish to present your information to others?
- How do you wish to present your information to yourselves?