



Australian Masked-Owl (*Tyto novaehollandiae*) © Nick Lambert (CC BY-NC-SA 4.0)

AUSTRALIA'S BIODIVERSITY DATA INFRASTRUCTURE

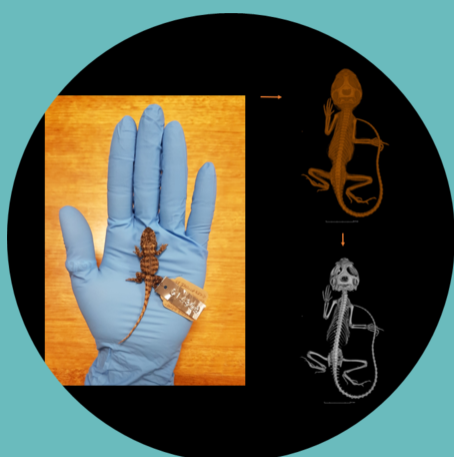
ALA Newsletter March 2022



Get your data ready!

Our Director Andre Zerger announces a new ALA grant program to encourage biodiversity data owners to standardise, digitise and share data with the ALA.

[Read more...](#)



Next ALA webinar

1pm AEDT Weds 16 Mar 2022

New data from historic collections

with Rocio Aguilar (Monash University and Museums Victoria), Emily Roycroft (ANU) and Olly Berry (CSIRO).

[Register now](#)

Join us for a Big Bushfire BioBlitz

It's been two years since the Black Summer 2019-20 bushfires devastated Australia. Researchers now need data to find out how the bush is recovering.

- **11–13 March:** Murrumbidgee National Park, Yuin Country, near Batemans Bay, NSW

[Register here...](#)



Australian Reference Genome Atlas

In an Australian first, our national research infrastructures are creating a digital atlas for researchers to discover and work with genomic data.

[Read more...](#)



GBIF Young Researchers Award

Are you a Masters or PhD candidate using data in GBIF or ALA? Nominations are now open for the GBIF 2022 Young Researchers Award.

[Apply now...](#)



Congratulations Dr Birgita Hansen AURIN-ALA grant recipient

In collaboration with the Australian Urban Research Infrastructure Network, Federation University and BirdLife Australia, we announced our first Built Environments and Biodiversity Project: Valuing Urban Wetlands.

[Read more...](#)



NCRIS: The power behind our science

NCRIS funding has and will continue to support the Australian community and economy according to a recent Lateral Economics report.

[Read more...](#)

Benefit to cost ratio of investment in NCRIS facilities is high (estimated to be **over \$7** for every **\$1** invested).



galah news

At February's VicBioCon, our team showcased the latest release of galah — ALA's R package. We live coded alongside workshop participants and it was a huge success!

If you'd like to host a workshop at your institution or workplace, [contact Dr Jenna Wraith](#), our new [Outreach and Engagement Coordinator](#).



ALA's research impact



Heather Burns & others @ANUFennerSchool modelled possible habitats of 5 deer species with field survey, @nswenviromedia & ALA data.



Beautiful and data-driven artwork by @QUT's @JenSeevinck uses observations of Australian Eucalypts collected via the #DeadTreeDetective.



From 2017 to 2020, Echidna CSI records totalled 8,090 sightings & 406 scats. This effort shows how #CitizenScience can fill critical data gaps.

Do you use the ALA for your research?

Visit [ALA-cited publications](#) and tell us about your research.

In case you missed it



We celebrated International Day of Women and Girls in Science by sharing our favourite stories of women in science.



Happy 10th Birthday DigiVol!
In 2021, the Australian Museum celebrated 10 years of the online volunteering platform.



In Arnhem Land, local Ngukurr Yangbala Rangers worked with Elders to add data to the ALA and record knowledge about freshwater turtles.

Follow our social channels for ALA news and updates



The Atlas of Living Australia is made possible by contributions from its many partners. It receives support through the Australian Government's National Collaborative Research Infrastructure Strategy (NCRIS) and is hosted by CSIRO.

[ALA.ORG.AU](#) | SUPPORT@ALA.ORG.AU

Share this email:



[Manage](#) your preferences | [Opt out](#) using TrueRemove™

Got this as a forward? [Sign up](#) to receive our future emails.

View this email [online](#).

GPO Box 1700
Canberra, | 2601 AU

This email was sent to .
To continue receiving our emails, add us to your address book.

emma

[Subscribe](#) to our email list.