



ALA Pilot with Olkola People

in the Cape York Peninsula

Pethie Lyons (CSIRO) and John Ross (Olkola Traditional Owner)

12 May 2016

LAND AND WATER

www.csiro.au



OLKOLA
Aboriginal Corporation



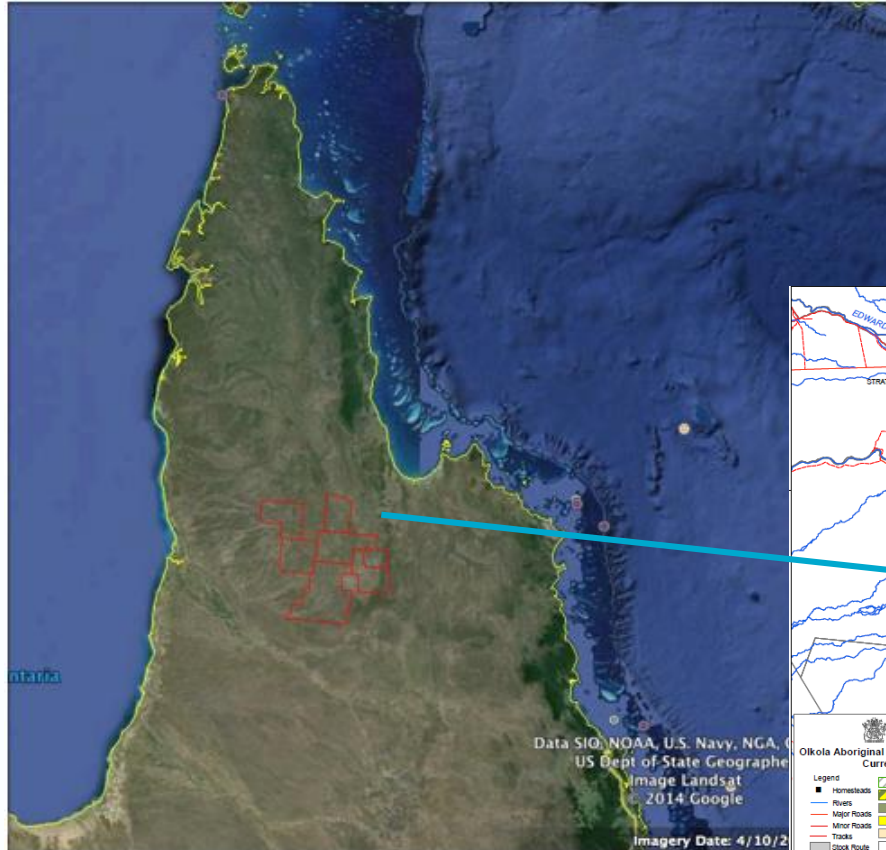
Project aim and approach

- Explore two-way exchange between Indigenous and scientific knowledge through the ALA
- Evaluate the benefits and risks for Indigenous people in working with the ALA
 - Indigenous concepts of risks and benefits
- An Indigenous driven approach

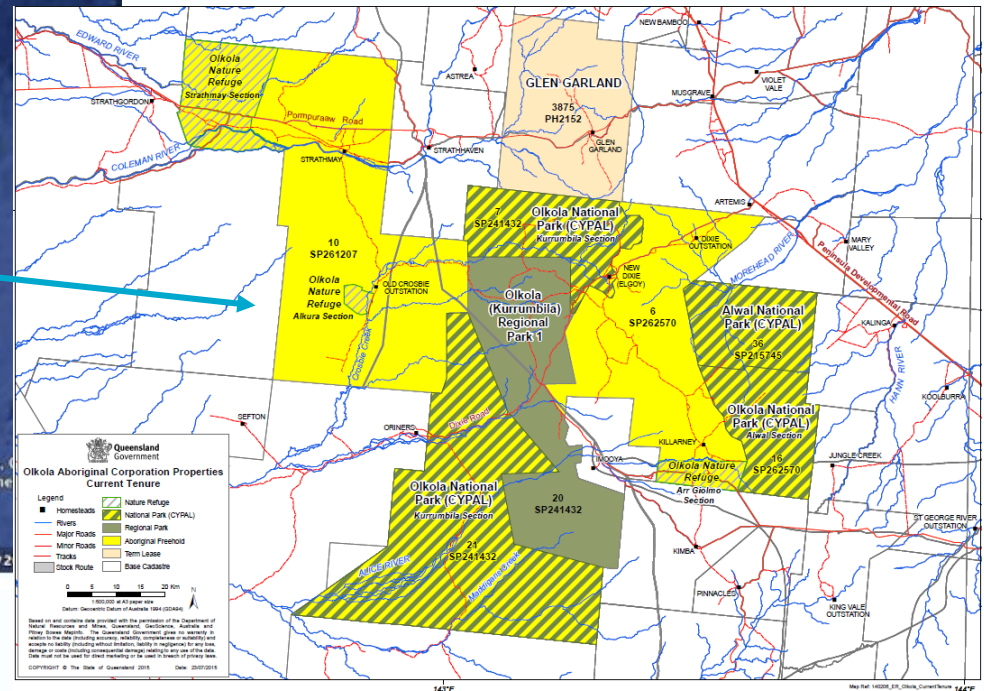


Olkola Traditional Owners talking with the project team at Killarney station. (Photos are the joint property of CSIRO and Olkola Aboriginal Corporation.)

Olkola Country in the Cape York Peninsula



Approximately 630,000 hectares



Pilot project team and participants

- Olkola elders/knowledge holders, rangers, Board of Directors, members and Olkola Aboriginal Corporation staff
- CSIRO – human geographers, naturalist, spatial expert
- Tropical Indigenous Ethnobotany Centre - Indigenous ethnobotanist



Olkola Traditional Owners John Ross, Brian Ross, Brendan Ross and John Braico talking with CSIRO project team. (Photos are the joint property of CSIRO and Olkola Aboriginal Corporation.)

What we are doing together:

- Base camp at Killarney station
 - Knowledge recording
 - Mapping of species
 - Talked about sharing information
- Developed a species profile and a table of conditions for sharing
- Presentation to Olkola board and members
- IP workshop
- Decision-making occurring through board



Olkola Traditional Owner Brian Ross with Gerry Turpin (TIEC) recording. (Photos are the joint property of CSIRO and Olkola Aboriginal Corporation.)

Our Profile

Names	Language name: Common names: Scientific name:
What it looks, smells, feels like	
Where it is found	
Food, medicine and other uses	
Connections with people	
Connections with country	
Management issues	
IP statement	



(Photos are the joint property of CSIRO and Olkola Aboriginal Corporation.)

Learnings from our ALA pilot

- What can the ALA and Data sharing contribute to Indigenous sustainable development?
- ‘Data’ is not all the same – some have stories and will be shared differently
- Not all places are the same – some are story places



Olkola Traditional Owners talking about their country with the project team. (Photos are the joint property of CSIRO and Olkola Aboriginal Corporation.)

Learnings from our ALA pilot

- Inclusion of Traditional Owners' country boundary
 - Knowing who is collecting on country
- 'Olkola of Concern Species' / 'of Concern Species'
- Group cultural and board governance bodies decide what is shared and how (needs time)



Olkola Traditional Owners Mike Ross, Brendan Ross, John Ross, Brian Ross and John Braico talking about places on their country. (Photos are the joint property of CSIRO and Olkola Aboriginal Corporation.)

Learnings from our ALA pilot

- Strong considerations of Intellectual property
- Traditional Owners control data from their database
- Package knowledge in a format it can be reviewed and is useful to groups
- Needs resources and time



Filming on country with Olkola Traditional Owners. (Photos are the joint property of CSIRO and Olkola Aboriginal Corporation.)

Land and Water

Ms Ilisapeci Lyons (Pethie)

t +61 7 4059 5017

e Ilisapeci.Lyons@csiro.au

w www.csiro.au/lorem

Olkola Traditional Owner

Mr John Ross

t +61 0474 033 300

e ceo@olkola.com.au

w www.olkola.com.au

LAND AND WATER

www.csiro.au



OLKOLA
Aboriginal Corporation

